



Design 4

## Villager Timber Products

Sole Contractors for:  
Pure Africa Development  
Hole in the Wall. Pty (Ltd)

Areas: 1<sup>st</sup> Floor – 110 sqm  
Deck – 75 sqm  
2<sup>nd</sup> Floor – 110 sqm  
Deck – 65 sqm

### Description:

This stunning home places the main living area on the upper level to make ultimate use of the views. Its large decks and big windows will allow you to enjoy the view in panoramic fashion.

The lower level has 3 bedrooms, 1 en-suit and the other two share a bathroom.

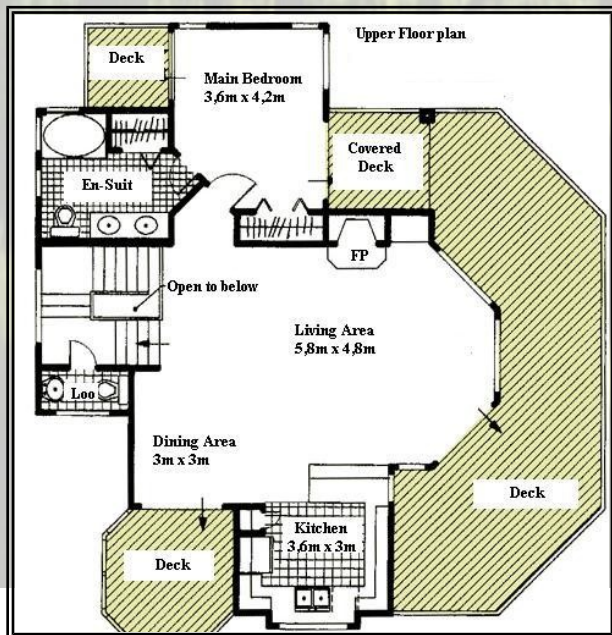
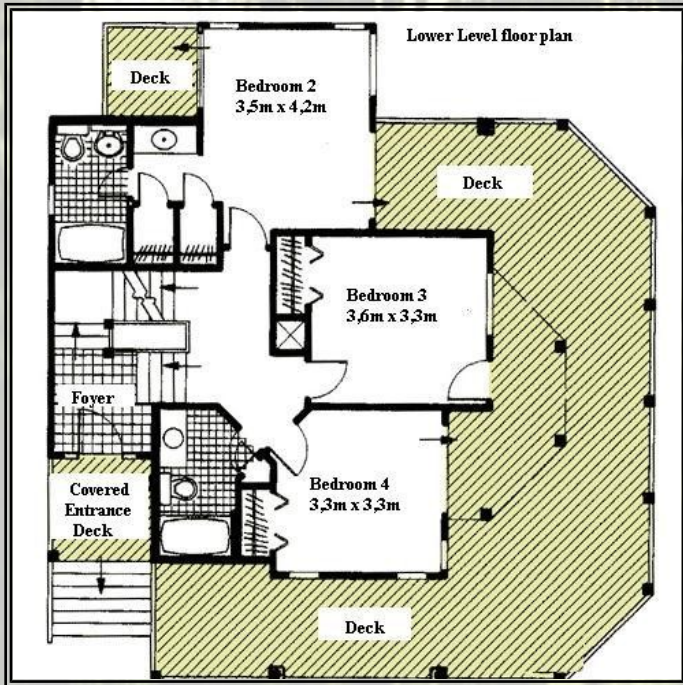
Access to the home is via a covered entrance deck and a split level foyer. The staircase leading to the living area can be custom built to your finish as this will be a focal point in this home.

The upper level is where it all happens.

The living area with open plan kitchen has large full height windows and a sliding door leading out onto the deck, where you can entertain to the sounds of the breaking waves.

The main bedroom has private access onto a covered deck where you can relax with a book or simply gaze out over the ocean.

A full en-suit completes this stunning home.



- Options:
- Fire place
  - Additional decks
  - Swimming pool
  - Jacuzi
  - Garages
  - Etc.

For more information on this design contact:

Nick De Jong  
Villager Timber Products  
Tel : 0826598432  
Email : villager@tfba.co.za